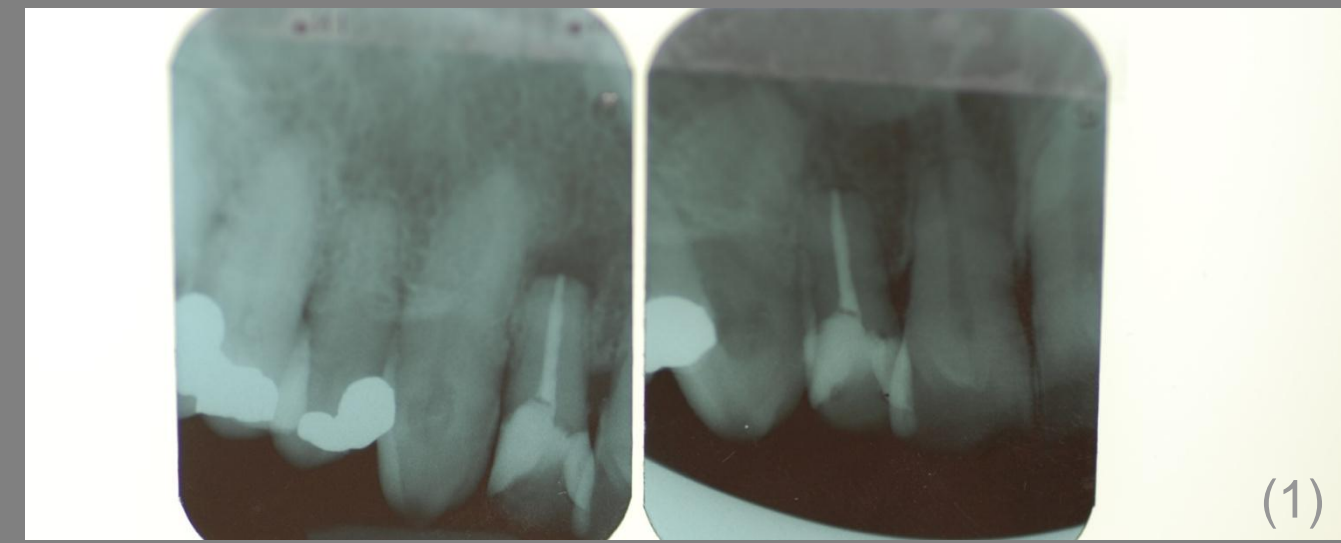


Restoration front 11 – 13 with Procera® AL₂O₃-3-unit bridge

Dental Technician: J. Koning*, Tandmeesters Nederland, Blaricum, The Netherlands
Dentist: P.J.L. Luynenburg, Maica dentistry, Westervoort, The Netherlands



Introduction & purpose

A patient, 56 years old. Tooth 12 is lost in March 2002. Previous a maryland-bridge was present. (2) In 2007 teeth 11 and 13 are endodontic treated and build up with glasfiber posts and Paracore (3). A temporary composite bridge was made by the dentist (4).

Material & Methods

By using the Procera® Forte scanner we made a Procera® 0,6mm AL₂O₃-3-unit bridge. In the lab the first bake was made with NobelRondo™ AL₂O₃ porcelain (5). Try in was done by the dentist. The patient visited the laboratory for finishing the bridge (6-7).

Result

We made a natural esthetic result with respect of the desire of the patient. The patient desired a diastema between 11 and 21 (7). By using a Procera® Alumina bridge and NobelRondo™ porcelain the restoration integrates beautiful in the mouth.

Conclusion

Nature of the mouth is a dynamic, biologic system. Diastema closed in time. Nevertheless after 10 months you still can't recognize the full ceramic Procera® bridge. (8-12)

Natures beauty is our challenge